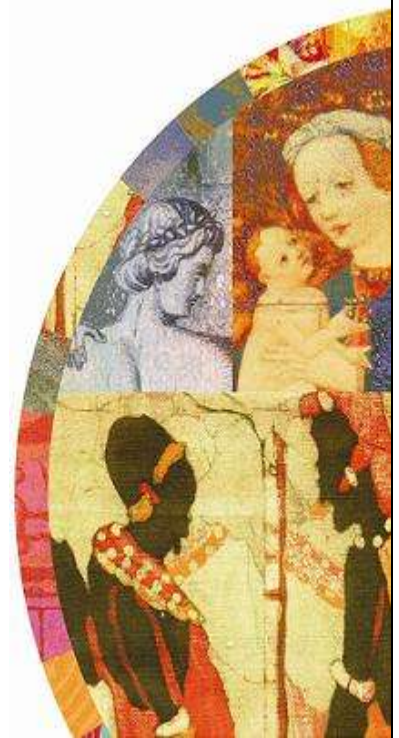


# *Women's Studies in Religion*

*Student Conference  
on Women and Religion  
on March 1<sup>st</sup> of 2013.  
Call for Papers open  
ONLY to GTU students  
in ANY program.*



*Due November 1<sup>st</sup> 2012:*

*Email a*

*Proposal (maximum 1000 words), Outline,  
and Bibliography to [wsr@ses.gtu.edu](mailto:wsr@ses.gtu.edu).*

*Proposals with a focus on gender and religion, on  
a wide range of topics and from any discipline  
within the GTU, will be considered, including but  
not limited to:*

*Feminist theory, women in religious traditions,  
and gender issues in biblical studies, theology, philosophy,  
spirituality, ethics and social theory.*

*Proposals should include a title, present the subject matter and  
indicate the approach and method that will be used.*

*Successful proposals will clearly outline the topic and argument to  
be pursued, including the relationship to a focus on gender and  
religion; demonstrate awareness of the existing body of scholarship  
on the topic; and indicate methodology to be employed.*

*The outline and bibliography should be no more than one page  
long each.*

To be considered by the WSR committee, this application and all supporting materials must be emailed to [wsr@ses.gtu.edu](mailto:wsr@ses.gtu.edu) no later than November 1<sup>st</sup> 2013 at 5pm. Late materials will not be accepted.

Student Name: \_\_\_\_\_

Email: \_\_\_\_\_

Program: \_\_\_\_\_

Year in Program: \_\_\_\_\_

Faculty Advisor: \_\_\_\_\_

**Student Consent:**

I certify that all the above and attached is correct and true. By submitting a proposal to the WSR Steering Committee, students grant permission for the use of this proposal for promotion on the GTU website and/or the Women's Studies in Religion newsletter. Any participant in the conference will have to supply a final electronic copy of the paper two weeks before the conference.

\_\_\_\_\_  
Date

Please attach the paper proposal, outline, and bibliography.